



# FlareAlert

## LED Flares

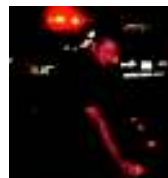
### What is it?

The FlareAlert is an all-purpose LED emergency beacon for use during emergencies or hazardous situations.

The FlareAlert is available in three (3) models: the FlareAlert, the Beacon, and the Beacon Pro.

All models.....

- contain super bright LEDs
- require AA alkaline batteries to operate
- are visible for miles from the ground and air
- require NO tools to change batteries



The FlareAlert system is considered an essential piece of equipment by hundreds of police and fire departments around the world.

### Where can I use it?

The FlareAlert is an essential tool, with countless uses. Some popular uses include:

#### Law Enforcement



- Accident scenes
- Lane closures
- DUI checkpoints
- Crowd control

#### Military



- Hot zones
- Triage
- Helicopter landings
- Training

#### Fire & EMS

- Helicopter landings
- Lane closures
- Accident scenes
- Search & rescue



#### Construction/Industrial

- Forklift/crane locator
- Vehicle loading
- Work zone safety
- Maintenance crews



# Why should I use it?

There are many reasons to use the FlareAlert system. For example:

#1: Safety: unlike strike flares, the FlareAlert is safe to use in any situation. It won't burn the user, start fires, damage expensive equipment, or release harmful fumes.

#2: Economics: the FlareAlert is a reusable emergency beacon that could literally last for years. The FlareAlert provides 20 hours of light for only \$2.00 (\$0.50 per AA battery). 20 hours of light using a strike flare would cost \$80.00 or more (\$1.00 per 15-min flare). Similar savings for the Beacon and Beacon Pro.

#3: Versatility: the FlareAlert is versatile; it serves as a emergency signal in literally any situation. Use the Cone Adaptor to secure it to a traffic cone. The Weighted Base accessory can be used to mark a landing zone. The magnetic base inside the FlareAlert allows it to be placed on the side of a vehicle.



No risk of brush fires



Don't throw money away

## FlareAlert Economics

The FlareAlert will save you money.

**A**t first glance, the FlareAlert might appear to be more expensive than strike flares.

However, because it is reusable, the FlareAlert pays for itself in only 4.5 hours of use!!!!

Savings after the initial 4.5 hours of use are substantial. Consider the following cost-to-run analysis.

### Strike flares

Cost = \$1.00 each

Duration = 15 minutes

Price per hour = **\$4.00**



vs.

### FlareAlert Beacon

Cost = \$2.00 (for 4 AA batteries)

Duration = 30 hours

Price per hour = **\$0.08**



# \$4.00 vs \$0.08

Strikes flares are 50X more expensive!!!!

Stop "burning" your money away!!!

Assumes \$0.50 per AA battery

# FlareAlert: 3 high performance models

## FlareAlert



**Brightness**  
42 lumens

**Crush Resistance**  
7,500 lb vehicle

**Modes/Functions**  
Single flash or steady

**Battery Life**  
Flash mode: 20 hours  
Steady mode: 8 hours

**Batteries Required**  
2 AA alkaline batteries

**Specs**  
4.13" x 4.13" x 1.75"  
7oz (with 2 batteries)

**Colors Available**  
red, yellow

## Beacon



**Brightness**  
79 lumens

**Crush Resistance**  
20,000 lb vehicle

**Modes/Functions**  
Double flash or steady

**Battery Life**  
Flash mode: 30 hours  
Steady mode: 12 hours

**Batteries Required**  
4 AA alkaline batteries

**Specs**  
3.75" x 3.75" x 1.75"  
8oz (with 4 batteries)

**Colors Available**  
red, yellow

## Beacon Pro



**Brightness**  
220 lumens

**Crush Resistance**  
20,000 lb vehicle

**Modes/Functions**  
Double flash or steady

**Battery Life**  
Flash mode: 30 hours  
Steady mode: 10 hours

**Batteries Required**  
4 AA alkaline batteries

**Specs**  
3.75" x 3.75" x 1.75"  
8oz (with 4 batteries)

**Colors Available**  
red, yellow, blue, green,  
white

Brightness and battery life tests conducted using red flares.

# FlareAlert Accessories



## Weighted Base



The rotor wash created by a landing helicopter can reach up to 150 mph. The Universal Weighted Base will keep your FlareAlerts in place.

All FlareAlert models are magnetic, so they will stick magnetically to the Universal Weighted Base. This accessory allows you to utilize all FlareAlert models to mark a landing zone for a helicopter.

The Universal Weighted Base fits all models of FlareAlert (FlareAlert, Beacon, and Beacon Pro).



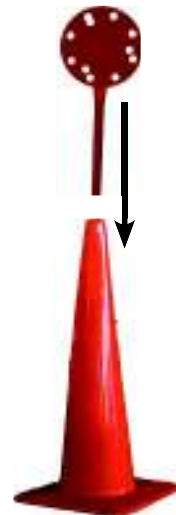
## Cone Adaptor



Need to place your FlareAlerts on top of a cone? No problem. Our Universal Cone Adaptor slides into the top of a cone.

The magnets in your FlareAlert adhere it to the Universal Cone Adaptor, increasing visibility. Simply attach your FlareAlert to the Universal Cone Adaptor and drop it into the top of any standard cone.

The Universal Cone Adaptor fits all models of FlareAlert (FlareAlert, Beacon, and Beacon Pro).



**T**he Universal Cone Adaptor secures 1-2 FlareAlerts to the top of a cone.

## Ground Stand

**No cone, no problem**



**W**hen used together, the Universal Cone Adapter screws into the Universal Weighted Base to form a third accessory...the Ground Stand.

**T**he Ground Stand allows you to elevate the FlareAlert when you don't have a cone or magnetic surface available. Elevating the FlareAlert makes it more visible, and less susceptible to being obstructed by snow, grass, or other objects.



Want to light up your cone without the use of accessories? Place your FlareAlert underneath the cone to make it glow. Now the cone is visible before being illuminated by a vehicle's headlights.

## Storage Bags

**Keep it all together**



**T**he Small Storage Bag can store up to:

- 3 FlareAlerts (any model)
- 12 AA alkaline batteries

**B**ags are made of durable polyester

**B**ags are available empty or full (kits)



**T**he Large Storage Bag can store up to:

- 8 FlareAlerts (any model)
- 8 Universal Cone Adaptors
- 8 Universal Weighted Bases
- 32 AA alkaline batteries

## Also Available

### FlareAlert w/ Super Magnets



The super magnets on this model provide incredible hold, making it ideal for customers who need to use the FlareAlert on a moving object (e.g. cranes, forklifts, tow trucks, tractors, etc).



## FlareAlert FAQs

**Q: How does the FlareAlert compare to other LED flares?**

**A: The FlareAlert is the most efficient LED flare on the market. No other flare can match the FlareAlert's visibility, affordability, and versatile array of accessories.**

**Q: Do all FlareAlerts come with a magnetic base?**

**A: Yes, all three (3) models have magnets built into the base.**

**Q: How many should I carry?**

**A: Most professional users store 6-8 FlareAlerts in each vehicle.**

**Q: What color should I use?**

**A: Depends on your application; please call us to learn how most customers use each color.**

**Q: How bright is it?**

**A: All models are visible for 3 or more miles**

**Q: Can the FlareAlert be used in daylight?**

**A: Yes, but the ambient light will diminish its effectiveness. Similar to a flashlight, the FlareAlert is more effective in darkened conditions.**

# FlareAlert Warranty

All FlareAlert products are guaranteed against failure due to factory defects in materials or workmanship for 2 years from the date of purchase. This warranty is non-transferable. Proof of purchase is required for repair or replacement. Warranty does not cover normal wear of parts or damage resulting from any misuse, negligence, altercation, or unauthorized repairs. Use of product is at own risk.



## Contact Information

Coast CATV Equipment Supply, Inc.  
314 Elizabeth Lane  
Corona, CA 92880

951-272-2360 \* 800-800-2770  
sales@coastcatvsupply.com